

SLATWALL-PVC AVA DISTRIBUTION AS



Slat-Wall Panels

Slat-Wall Accessories

Floors

Cabinets

BRAND AT GLANCE

THE SMART, FLEXIBLE WALL STORAGE SYSTEMS

SLAT-WALL SYSTEMS

WallFactor panels



Dual Groove



WallFactor panels & Dual Groove strip are patented “slat-wall” style tracks for hanging hooks, accessories, baskets and boxes.

HOOKS & ACCESSORIES



From hooks and baskets to shoe racks and shelves, the full line of accessories gives every item a home.

MODULAR FLOOR



Thanks to our tile floor covering that installs quickly and without adhesives, transforming your garage has never been easier.

CABINETS & BENCHES



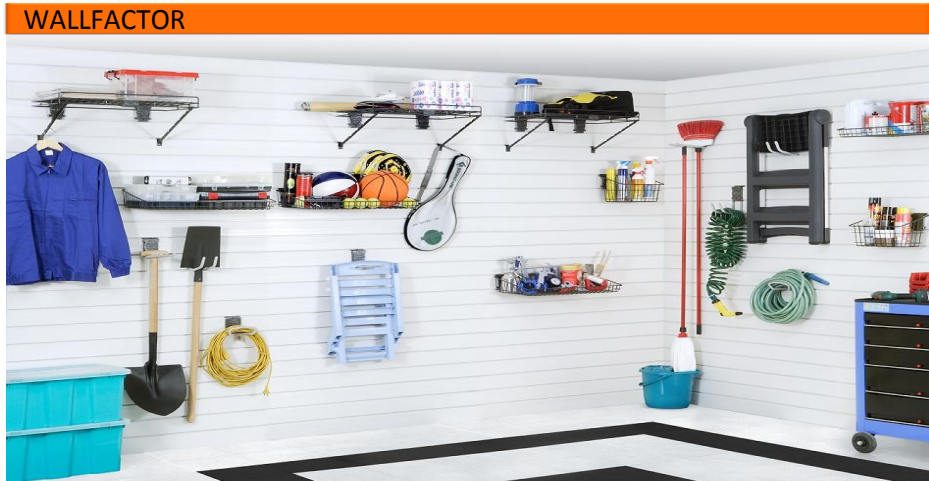
Cabinets and modular workbenches provide superior support and versatility for projects large and small.

CREATE A WALL ORGANIZATION SYSTEM

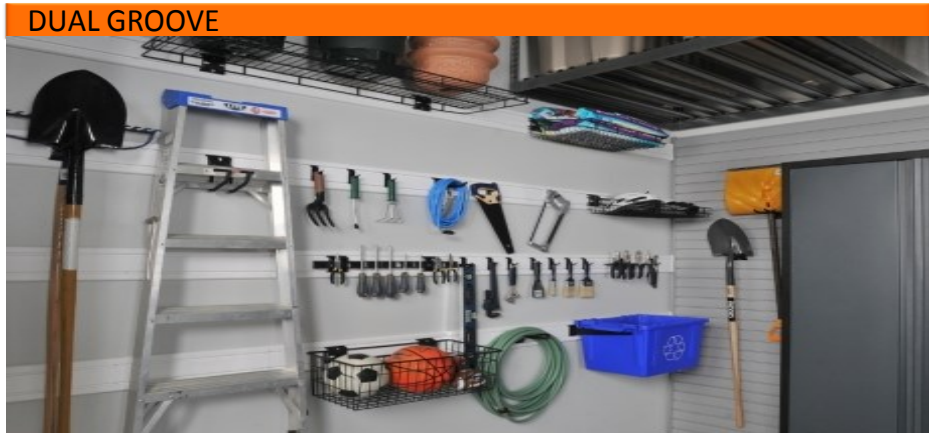
CREATE A WALL ORGANIZATION STORAGE SPACE

Slat-wall is a construction material used to cover walls to create storage, display or hanging space. Made from durable PVC material, unlike the wood, WallFactor wall panels are environmentally friendly, light weight, waterproof, fire-resistant, UV protected and unbelievably strong.

WALLFACTOR



DUAL GROOVE



1

Choose a wall system

Wall systems are unique slat-wall style tracks made for hanging hooks, cabinets, shelves, baskets, and accessories. We offer two type systems:

- Wide panels 8 feet long
- Dual Groove strip 4 feet long

CHANNELS

Our wall systems are equipped with specially designed channels, so that the hooks, baskets and shelves provide you the ultimate flexible storage on the wall. At any time you can change the layout and move the tools to suit your space needs.

PANELS

Full coverage or any part of the wall. They can be easily cut to size to avoid obstacles such as windows or doors. Use the potential of the 'Dual Groove' and organize your garage, storage and utility room.

Product FEATURES:

- Made of durable PVC
- Easy to clean
- Supplied with colour matching screws
- Load capacity up to 200 lbs.
- Panel area approximately 4 sq. ft.
- Low weight with high density
- Modular assembly

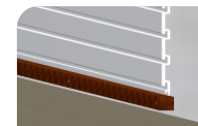
2

Install the system

Slat-wall systems easily install on a variety of walls, including masonry, wood studs or drywall over wood or metal studs.*

Quick steps:

1. Locate the timber stud and mark their central position.
2. Fit a temporary batten This will support the first panel making sure the installation is level.



3. Drill small holes (pilot holes) in each horizontal slot and each stud so the weight distribution is equally divided.



4. Add the second slat-wall panel on top of the ones already fixed. The bottom tongue of the top panel should engage with the top groove of the bottom panel and ensure it is flat and level.



3

Mount accessories

Adding hooks, shelves, baskets, bins and cabinets is an instant attachment to any of our WallFactor mounted panels and Dual Groove strips without the need for screws or fixings.

Quick steps:

1. Choose from wide range of accessories.
2. Insert top tab into the groove and align bottom tab with bottom channel.
3. Push firmly until you hear a "click".



At any time you can change the layout and move the tools to suit your space needs.

*see installation instructions for details

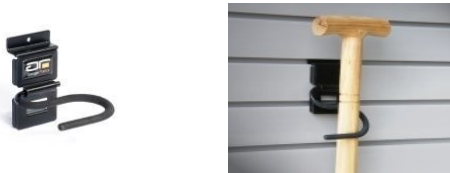
HOOKS AND ACCESSORIES

ADD FLEXIBILITY TO YOUR STORAGE NEEDS



Offers a fully flexible range of hooks, baskets and shelves, adjustable to your ever growing needs for wall storage. These product are made with a black finish and simply clip onto WallFactor panels and Dual Groove strips.

S hook



A hook with rubberised coating. Perfect for home applications and gardening. It is great for mops, brushes, brooms, hockey sticks, gardening tools and snow shovels.

Rounded hook



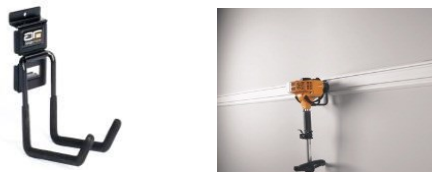
Perfect for storing small ladders, garden hoses, ropes or chains. Rubberised coated ends secure equipment from scratches, wear and tear.

Bike hook



A specialised hook designed to store a bicycle off the ground by its front wheel.

J hook



Great for garden tools and lawn mowers. Withstands heavy items and extreme conditions.

Accessories hook



Carefully welded steel makes this hook look beautiful. Great for keeping small tools such as screwdrivers, pliers, hammers within easy reach.

Long rounded hook



A wide hook with rubberised coating secures equipment from scratches, wear and tear. For storing small ladders, garden hoses, ropes.

Single hooks



This range of the single hooks are ideal for storing small items such as spanners, tools, clothing, garden forks, gloves, hats and more. Excellent for shop displays. Versatile in its use.

Double hooks



The outstanding versatility of this hook ensures storage space is fully used. Applications range from folding garden carts to axes, hammers and tools. Long arms allow you to store several things at once such as a rake and shovel.

Shelf bracket



Perfect if you need to fit a custom shelf within WallFactor panels channels. The length of shelves can be freely adjusted and repositioned according to your needs.



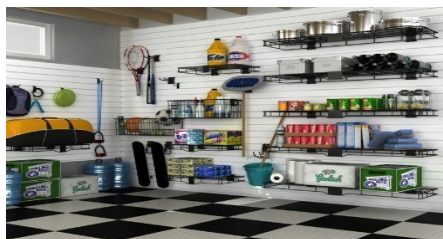
Before



After

BASKETS AND SHELVES

CHOOSE THE PERFECT SETUP



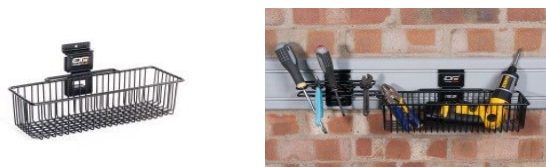
The wire basket slides into WallFactor mounted panels giving you the flexibility to move it around as your needs change. Robust design allows for storage of multipurpose and heavy items.

PRODUCT FEATURES:

- Made of steel
- Durable electrostatic powder coating
- Wide selection of sizes and capacities
- Weight capacity: 20-40lb
- Colour: Black



Small basket



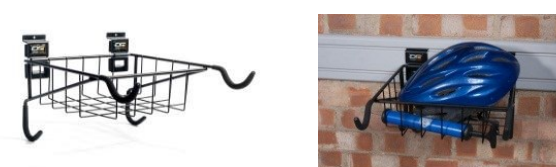
The wire basket slides into WallFactor mounted panels giving you the flexibility to move it around as your needs change. Great for small tools and cans of spray.

Flat basket



The open design of this basket makes items clearly visible. Low edges help positioning of objects and allow easy access to them. Application: chemicals sprays, cans with paint, bags with compost.

Bike rack with basket



Store your bicycle together with your cycle gear. Rubber coating protects your bike from scratches and wear. Could be easily repositioned on WallFactor panel channels to address changing space requirements.

Middle basket



Robust design allows for storage of multipurpose car care products. It is great for storing spray bottles and other frequently used items off the floor and within easy reach.

Shelf



Designed for heavy, bulky stuff. The open design ensures that items are clearly visible. Shelves can be used in a continuous line to increase storage capacity.

Big basket



Great for sports equipment, automotive supplies and other difficult to store items. Design allows for storage of multiple sports balls and sport equipment.

Shoe shelf



Don't bring mud under your shoes to your home. Specifically designed to store sports shoes and working boots. It can accommodate up to four pairs of shoes.

CONTACT:

AVA DISTRIBUTION AS
ELVEFARET 17, 2625 FÅBERG
NORWAY

Tlf. 61 10 00 15

Email: info@ava-butikkinnredning.no